



Company Name: \_\_\_\_\_ Job Site Location: \_\_\_\_\_

Date: \_\_\_\_\_ Start Time: \_\_\_\_\_ Finish Time: \_\_\_\_\_ Foreman/Supervisor: \_\_\_\_\_

### **Topic 130: Long Hair – fashion or hazard?**

**Introduction:** In many construction and production work environments, long hair can put you in harm's way. It does not require genius to recognize the potential risks of wearing long hair in close proximity to turning and rotating equipment or machinery. If a powerful piece of rotary or reciprocating equipment grabs your hair, you could easily wind up being literally "scalped." Machinery does not care if you are male or female. On several occasions last year males and females had to pry out a missing hunk of their hair and scalp from wheels, gears, and pulleys. In no way is this meant to be construed that you can not wear your hair in any manner you choose, only that you (both men and women) must take the necessary precautions while at work.

**Equipment types where extra caution must be taken if your hairstyle is long:**

- Machines with belt driven wheel and pulley assemblies.
- Conveyor equipment with rollers and thick rubber or hinged metal traveling belts; especially around the power-drive mechanisms where large gear-drives, turning shafts, and carriage blocks are located.
- Do not perform service, maintenance, or repairs on gasoline or diesel powered engines that are running. To guard against accidental start-up, disable the starting circuit and apply proper lockout/blockout-tagout procedures.
- Hoisting and lifting equipment present several hazards for long unrestrained hair and beards. Cables spooling-up on turning hoist drums or winches, turning bearings, shafts gears, rollers, hook roller brackets, and hook pulley blocks can easily catch hold of loose hair.
- Loose hair can easily be sucked or drafted into turning machinery.



**Facial hair:**

- Beards present a hazardous situation where torch-cutting and arc welding processes occur. If you are not wearing a full face helmet, it is possible you could set your beard on fire and burn your face.
- Smooth skin is needed for proper sealing and fitting for most respiratory protection. If your work-place involves hazardous atmospheres, your safe breathing apparatus must seal properly.

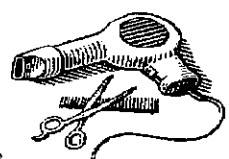


**Distractions caused by long hairstyles:**

- If your hair is loose and flowing, it can blow around and get in your face or eyes and obstruct your view.
- Avoid fixing and styling your hair while working with machinery and operating a vehicle.

**Solutions for long hair:**

- If you have long hair, be sure to check with your company as to the specific policy regarding the proper way to wear your hair.
- Tuck the hair into a hat or tie the hair back to reduce the chance of tangling the hair in equipment.
- Braid the hair into one thick strand, use multiple hair-ties, wear a hair-net, or do whatever it takes to keep the long hair tied back securely out of the way.



**Conclusion:** Nobody wants to ever infringe upon an employee's legal right to self-expression. However, it is everyone's (employer/employee) responsibility to create and promote a safe work environment. With that in mind, one must take personal responsibility to ensure that their long hair is not a safety hazard. Good grooming practices and the use of common sense when addressing the matter of long hair is essential. Do not let your choice of hair-style put you at risk.

### **Work Site Review**

Work-Site Hazards and Safety Suggestions: \_\_\_\_\_

Personnel Safety Violations: \_\_\_\_\_

Material Safety Data Sheets Reviewed: \_\_\_\_\_ (Name of Chemical)

**Employee Signatures:** \_\_\_\_\_  
 (My signature attests and verifies my understanding of and agreement to comply with, all company safety policies and regulations, and that I have not suffered, experienced, or sustained any recent, job-related injury or illness.)

\_\_\_\_\_  
 \_\_\_\_\_  
 \_\_\_\_\_  
 \_\_\_\_\_  
 \_\_\_\_\_

**Foreman/Supervisor's Signature:** \_\_\_\_\_

*These guidelines do not supercede local, state, or federal regulations and must not be construed as a substitute for, or legal interpretation of, any OSHA regulations.*